

\$530,000 - 204 & 205, 27211 Highway 12, Rural Lacombe County

MLS® #A2260871

\$530,000

0 Bedroom, 0.00 Bathroom,
Commercial on 0.00 Acres

Wildrose Commercial Park, Rural Lacombe
County, Alberta

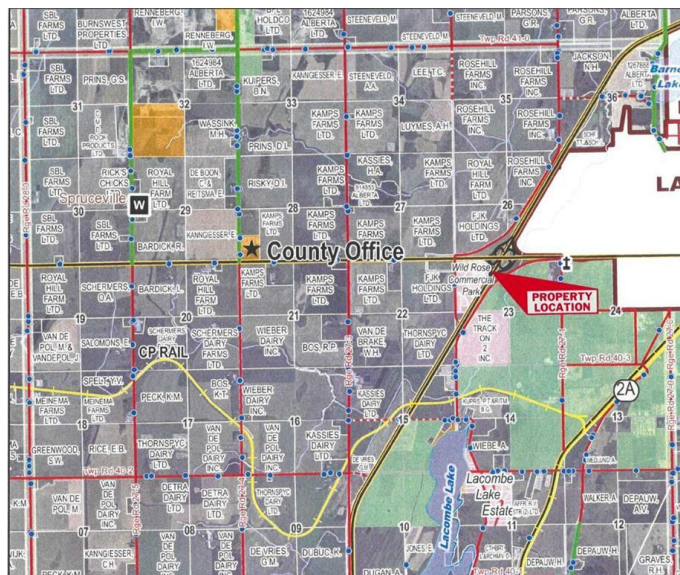
FORECLOSURE – 2 condo bays located in the Wild Rose Commercial Park at the junction of Highway 12 and Highway #2. Property is approx. 3,800 sq. ft. on the main floor and an additional 530 sq. ft. on the mezzanine. The basic layout of the units consists of an open retail area with an office, 3 piece washroom in unit 12 with rear coolers and cutting area. Unit 11 mostly comprises of coolers and cutting floor area with a mezzanine lunchroom/office. Unit has a rough-in for washroom only and a 16' x 16' overhead door in each bay. The property is all paved front and back and comes with a graveled, fenced yard for each bay in the rear. Offered well below assessed value.

Built in 2016

Essential Information

MLS® #	A2260871
Price	\$530,000
Bathrooms	0.00
Acres	0.00
Year Built	2016
Type	Commercial
Sub-Type	Mixed Use
Status	Active

Community Information



Address	204 & 205, 27211 Highway 12
Subdivision	Wildrose Commercial Park
City	Rural Lacombe County
County	Lacombe County
Province	Alberta
Postal Code	T4L 0E3

Interior

Heating	Natural Gas
---------	-------------

Exterior

Roof	Metal
------	-------

Additional Information

Date Listed	September 29th, 2025
Days on Market	10
Zoning	C-HC

Listing Details

Listing Office	RE/MAX real estate central alberta
----------------	------------------------------------

Data is supplied by Pillar 9â„¢ MLS® System. Pillar 9â„¢ is the owner of the copyright in its MLS® System. Data is deemed reliable but is not guaranteed accurate by Pillar 9â„¢. The trademarks MLS®, Multiple Listing Service® and the associated logos are owned by The Canadian Real Estate Association (CREA) and identify the quality of services provided by real estate professionals who are members of CREA. Used under license.