

\$300,000 - 208, 27211 Highway 12, Rural Lacombe County

MLS® #A2260861

\$300,000

0 Bedroom, 0.00 Bathroom,
Commercial on 0.00 Acres

Wildrose Commercial Park, Rural Lacombe
County, Alberta

FORCLOSURE – Condo bay located in the Wild Rose Commercial Park at the junction of Highway 12 and Highway #2. Highly visible location. The bay is approx. 1950 sq. ft. on the main floor with reception area, coffee station, 2 piece washroom, 3 offices and an open back shop area with 1 office – c/w 1 16' x 16' overhead door. The mezzanine area is approx. 790 sq. ft. with a boardroom – 15' x 15', 2 offices plus another 490 sq. ft. of framed undeveloped office area. The property is all paved front and back and comes with a graveled, fenced yard. Selling well below assessed value.

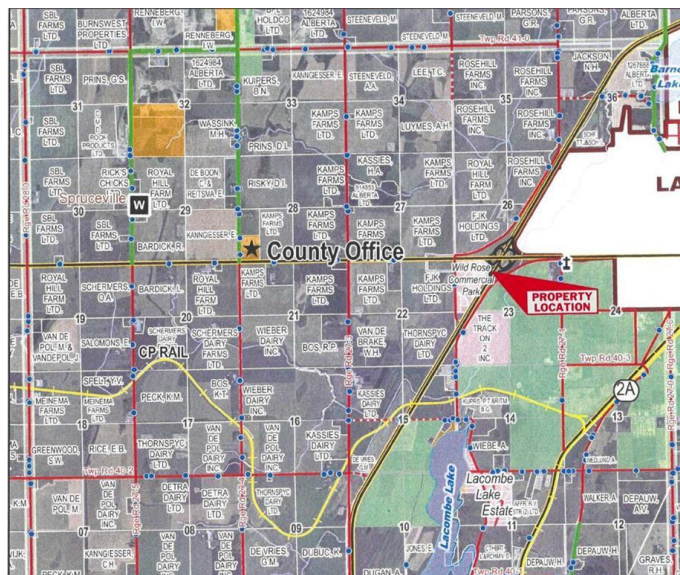
Built in 2016

Essential Information

MLS® #	A2260861
Price	\$300,000
Bathrooms	0.00
Acres	0.00
Year Built	2016
Type	Commercial
Sub-Type	Mixed Use
Status	Active

Community Information

Address 208, 27211 Highway 12



Subdivision	Wildrose Commercial Park
City	Rural Lacombe County
County	Lacombe County
Province	Alberta
Postal Code	T4L 0E3

Interior

Heating	Natural Gas
---------	-------------

Exterior

Roof	Metal
------	-------

Additional Information

Date Listed	September 29th, 2025
Days on Market	8
Zoning	C-HC

Listing Details

Listing Office	RE/MAX real estate central alberta
----------------	------------------------------------

Data is supplied by Pillar 9â„¢ MLS® System. Pillar 9â„¢ is the owner of the copyright in its MLS® System. Data is deemed reliable but is not guaranteed accurate by Pillar 9â„¢. The trademarks MLS®, Multiple Listing Service® and the associated logos are owned by The Canadian Real Estate Association (CREA) and identify the quality of services provided by real estate professionals who are members of CREA. Used under license.