

\$475,000 - 21 Pine Crescent, Blackfalds

MLS® #A2210159

\$475,000

4 Bedroom, 3.00 Bathroom, 1,092 sqft

Residential on 0.17 Acres

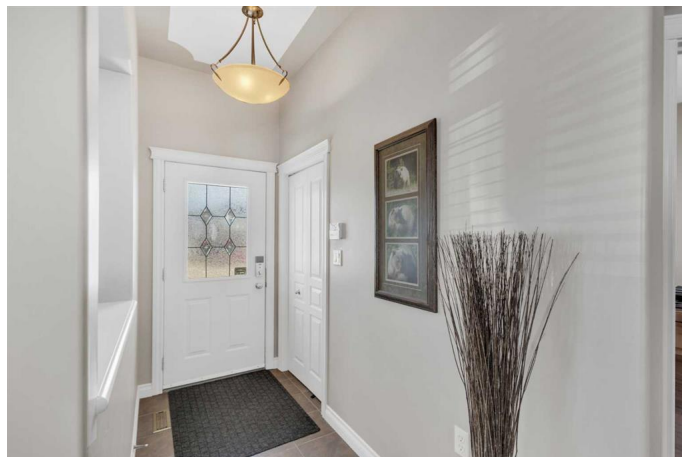
Panorama Estates, Blackfalds, Alberta

Fully finished bungalow on a 7250 sq. ft pie shaped lot! Open concept main floor plan with a spacious living, hardwood floors that are in incredible condition. Everything in this home is immaculate! The kitchen features stainless steel appliances with a brand new dishwasher! The dining area is large enough to fit a big table. The primary bedroom on the main floor easily accommodates a king bed and has a walk in closet plus an ensuite bathroom with a corner, air jet tub. There's another bedroom and bathroom on the main floor. Downstairs, there's two more bedrooms, spacious family room and a 3pc. bathroom. There's also a separate entrance to the basement that leads out to the yard. Other features include: central AC, in floor heat in the basement, heated garage equipped with 220V, a large two tiered deck with storage underneath, hot tub (sold as-is), dog run, fire pit area, and new shingles in 2024. Incredible value in this immaculate home.

Built in 2005

Essential Information

MLS® #	A2210159
Price	\$475,000
Bedrooms	4
Bathrooms	3.00
Full Baths	3



Square Footage	1,092
Acres	0.17
Year Built	2005
Type	Residential
Sub-Type	Detached
Style	Bungalow
Status	Active

Community Information

Address	21 Pine Crescent
Subdivision	Panorama Estates
City	Blackfalds
County	Lacombe County
Province	Alberta
Postal Code	T0M 0J0

Amenities

Parking Spaces	2
Parking	Double Garage Detached, Heated Garage, Insulated
# of Garages	2

Interior

Interior Features	Breakfast Bar, Central Vacuum, Closet Organizers, Jetted Tub, Walk-In Closet(s), Sump Pump(s)
Appliances	Central Air Conditioner, Dishwasher, Dryer, Garage Control(s), Microwave, Refrigerator, Stove(s), Washer, Window Coverings
Heating	In Floor, Forced Air
Cooling	Central Air
Has Basement	Yes
Basement	Exterior Entry, Finished, Full

Exterior

Exterior Features	None
Lot Description	Back Lane
Roof	Asphalt Shingle
Construction	Vinyl Siding
Foundation	Poured Concrete

Additional Information

Date Listed	April 9th, 2025
Days on Market	18
Zoning	R1S

Listing Details

Listing Office	Century 21 Maximum
----------------	--------------------

Data is supplied by Pillar 9â„¢ MLS® System. Pillar 9â„¢ is the owner of the copyright in its MLS® System. Data is deemed reliable but is not guaranteed accurate by Pillar 9â„¢. The trademarks MLS®, Multiple Listing Service® and the associated logos are owned by The Canadian Real Estate Association (CREA) and identify the quality of services provided by real estate professionals who are members of CREA. Used under license.