

# \$4,200,000 - On Range Road 28-4, Rural Lacombe County

---

MLS® #A2197360

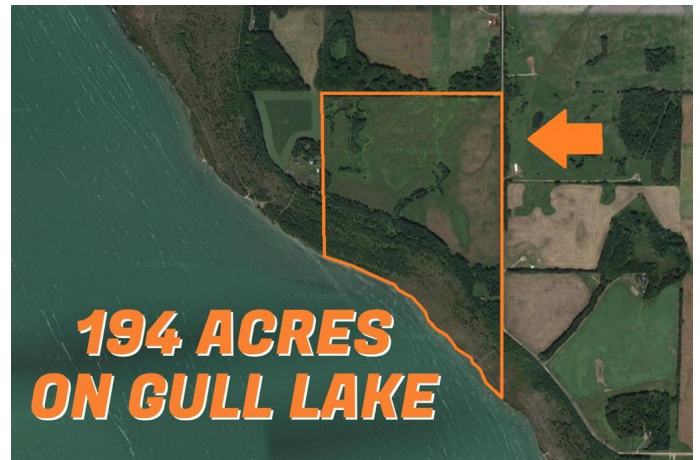
**\$4,200,000**

0 Bedroom, 0.00 Bathroom,  
Land on 194.00 Acres

NONE, Rural Lacombe County, Alberta

**AMAZING INVESTMENT OPPORTUNITY!!**

194 acres located on beautiful Gull Lake.  
Popular for its recreation and great fishing and centrally located between Calgary and Edmonton, this parcel of land is ready for future subdivision in Central Alberta. No set development plan means you can be the artist with this blank canvas. Potential for multiple residences per lot.



## Essential Information

MLS® #	A2197360
Price	\$4,200,000
Bathrooms	0.00
Acres	194.00
Type	Land
Sub-Type	Commercial Land
Status	Active

## Community Information

Address	On Range Road 28-4
Subdivision	NONE
City	Rural Lacombe County
County	Lacombe County
Province	Alberta
Postal Code	T4L 2N1

## Additional Information

Date Listed	February 26th, 2025
Days on Market	61
Zoning	AG

### **Listing Details**

Listing Office	Greater Property Group
----------------	------------------------

Data is supplied by Pillar 9â„¢ MLS® System. Pillar 9â„¢ is the owner of the copyright in its MLS® System. Data is deemed reliable but is not guaranteed accurate by Pillar 9â„¢. The trademarks MLS®, Multiple Listing Service® and the associated logos are owned by The Canadian Real Estate Association (CREA) and identify the quality of services provided by real estate professionals who are members of CREA. Used under license.